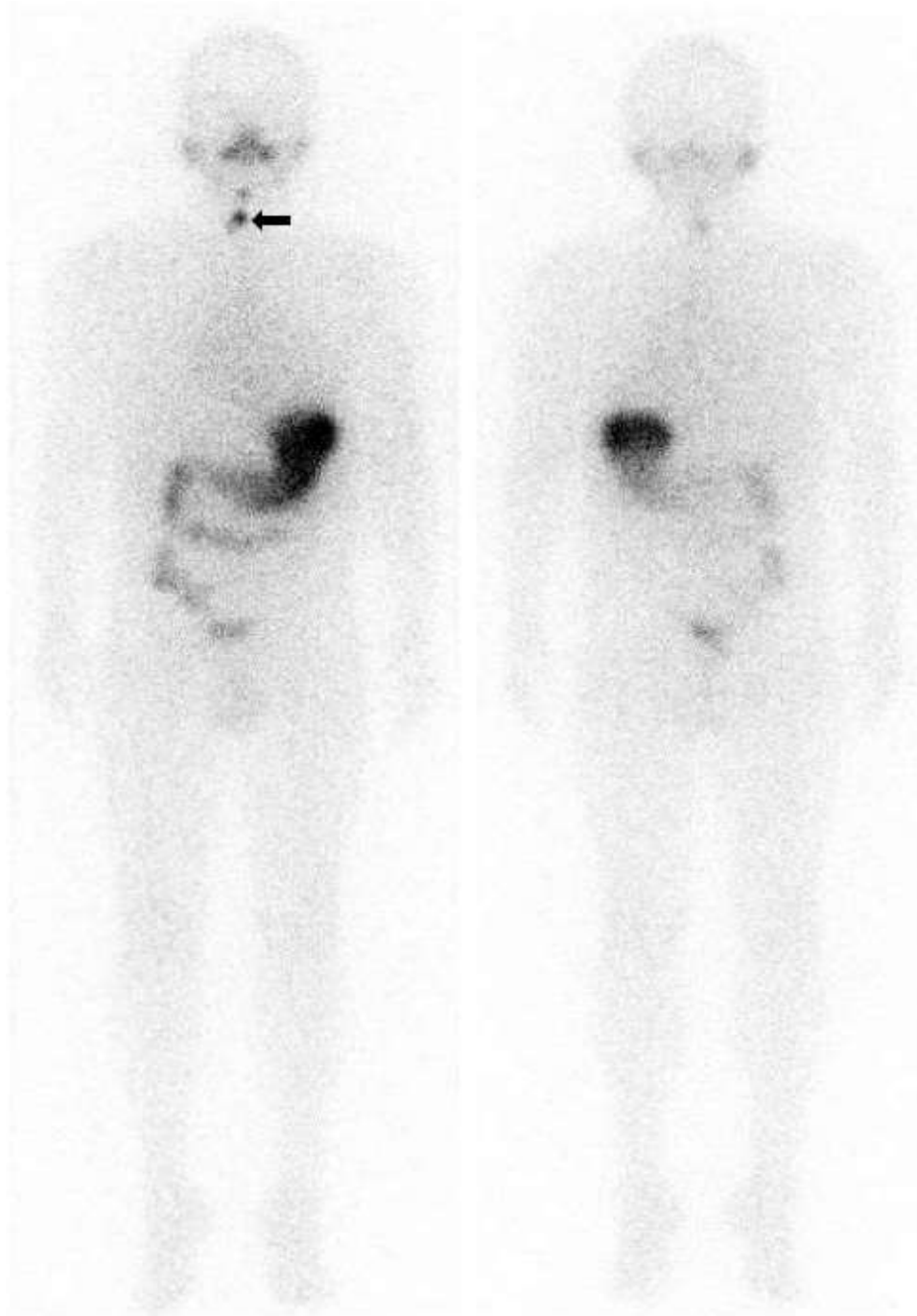
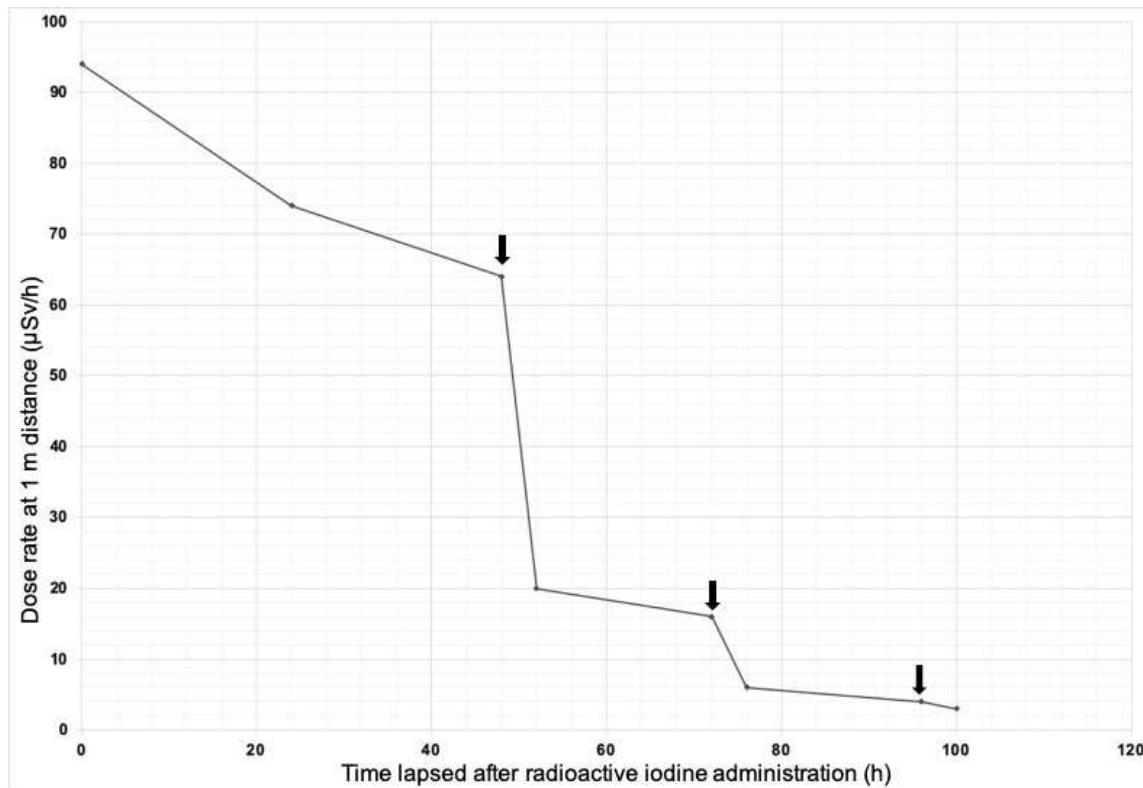


Supplemental Figure 1. Low dose whole-body radioiodine scan shows focus of tracer uptake in the thyroid region suggestive of thyroid remnant (arrow).



Supplemental Figure 2. Graph showing dose rate at stomach level at a distance of 1 metre from the patient at different time points during the course of treatment (Dialysis done at 48, 72 and 96 hours; arrows).



Supplemental Figure 3. Low dose whole-body radioiodine scan done after six months of radioiodine therapy shows resolution of tracer uptake in the thyroid region.

