

FIGURE 2. Segmented ROIs defined by semiautomatic technique. (A) Femoral-shaft ROI with cortical bone only forming hollow cylinder (red). (B) Femoral-neck ROI (green). (C) Total-hip ROI including trabecular and cortical bone of trochanter and femoral neck (red).

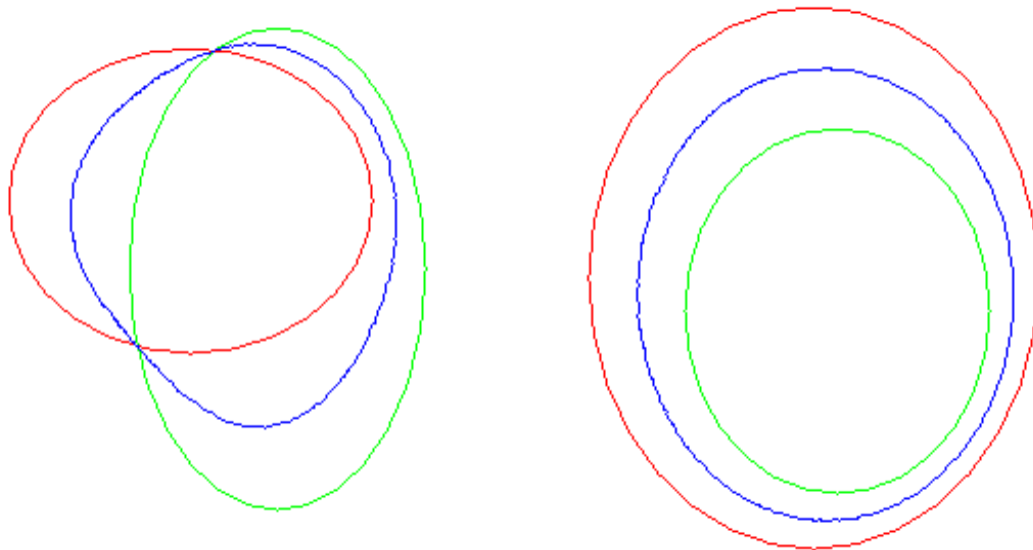


FIGURE 3. Two different examples of mean region (blue ovals) estimation using mean point-based distance between 2 regional boundaries (red ovals and green ovals).

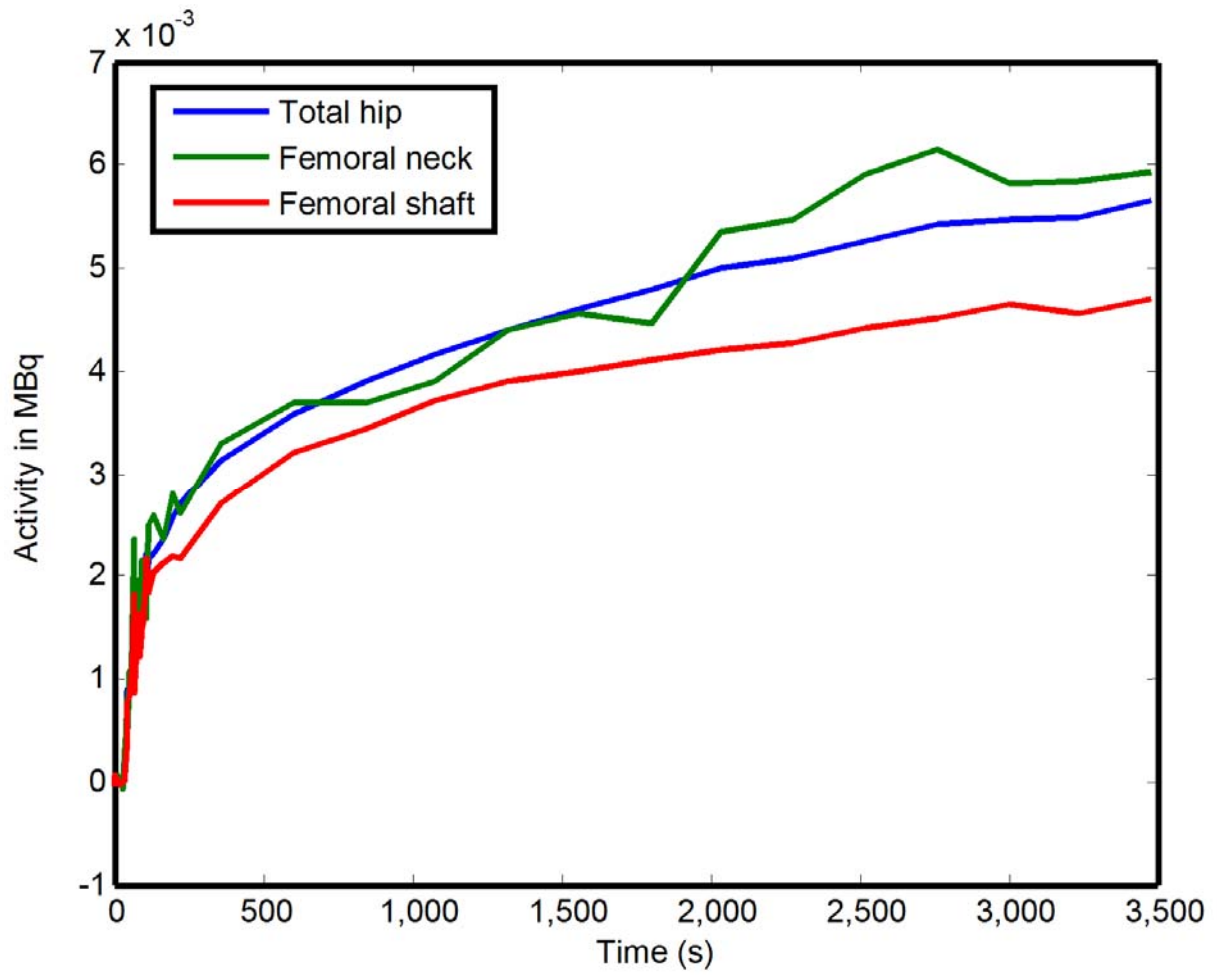


FIGURE 4. Mean time–activity curves generated from semiautomatically segmented ROIs.