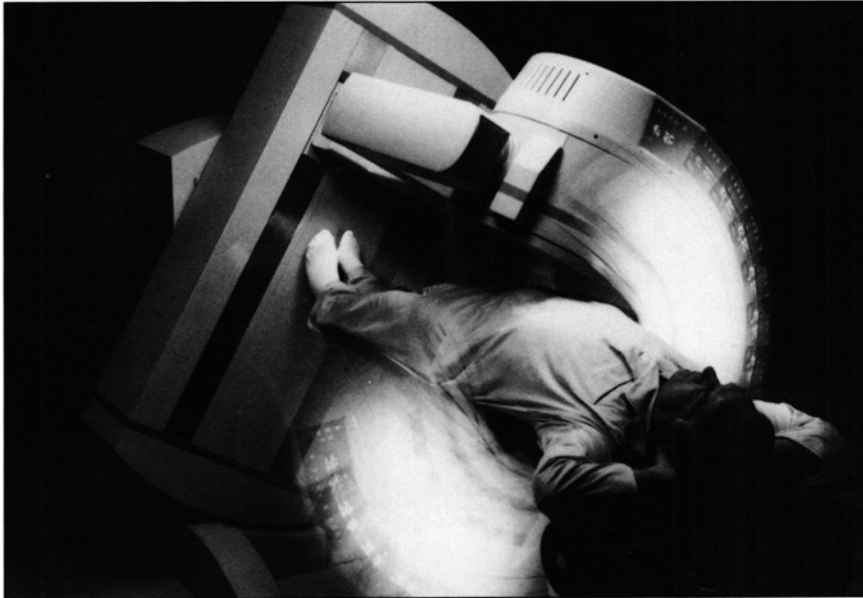


NEW PRODUCTS

■ Cirrus Gamma Camera

ADAC Laboratories has announced the introduction of the Cirrus gamma (scintillation) camera, a premier circular field of view system for application in SPECT, total body and planar patient imaging. The Cirrus is ideal for departments performing a large spectrum of patient exams, from conventional planar studies to advanced SPECT cardiac procedures. Included on the system are extended arm reach for greater access to



patient and ease of patient positioning; high quality detector electronics for superior image quality; direct radial drive for optimal collimation providing high resolution and sensitivity; pre-programmed position-

Each description of the products below was condensed from information supplied by the manufacturer. The reviews are published as a service to the professionals working in the field of nuclear medicine and their inclusion herein does not in any way imply an endorsement by the Editorial Board of the *Journal of Nuclear Medicine Technology* or by The Society of Nuclear Medicine.

■ Blood Handling Control System

Mallinckrodt Nuclear Medicine is introducing the first comprehensive blood handling control system for diagnostic imaging procedures requiring the radiolabeling of patient blood samples. This new control system will minimize errors in blood handling that might result in the transmission of infectious diseases during nuclear medicine procedures. When a blood labeling study is needed, the hospital technologist contacts a Mallinckrodt Diagnostic Imaging Services (DIS) nuclear pharmacy and requests a blood collection kit. Each kit includes a blood collection record, a patient wristband and control labels imprinted with patient's name and individualized control number. To facilitate use of the Blood Handling Control System, Mallinckrodt Medical is offering an instructional video and manual

ing to reduce setup time and improve patient throughput; and simple, easy to learn imaging protocols. *ADAC Laboratories, 540 Adler Dr., Milpitas, CA 95035. (310) 355-0761.*

that will familiarize health professionals with the procedures for maintaining integrity of the blood sample. *Mallinckrodt Medical, Inc., 675 McDonnell Blvd., St. Louis, MO 63134. (314) 895-2078.*

■ Nuclear Medicine Computer and Workstation

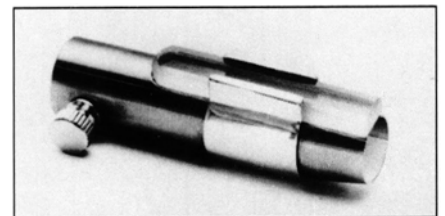
Toshiba America Medical Systems, Inc. has introduced a new line of powerful nuclear medicine computers and workstations that accomplish data acquisition, processing and archiving. The new HG Series GMS-5500 provides capabilities to perform both acquisition and post-processing functions, building on the review capabilities of the Toshiba ES-100 Workstations. Based on the power and speed of a 32-bit, 33 MHz, 66Mflops processor, the time required for both acquisition and post-processing is vastly reduced.

Many easy to use features are built into the workstations including an optical three-button mouse and icons designed to be natural and intuitive for the diagnostic clinician. The system includes full display, windowing and multi look-up tables. *Toshiba America Medical Systems, Inc., S 2441 Michelle Dr., Tustin, CA 92681-2068. (714) 730-5000.*

■ Patient Arm Support System

R-Made, Inc. introduces the patient arm support system. This system is designed to comfortably support a patient's arms during cardiac SPECT and other diagnostic imaging procedures. The arm support system is a new solution to motion artifact caused by the discomfort and pain of prolonged upper extremity hyperextension and abduction. The support system conforms to the patient's anatomy, suits the requirements of all major original equipment manufacturers and is the result of clinical testing over several years. Each feature has been engineered to best address patient need and to fit most imaging and treatment table designs without modification. It also increases technician efficiency and reduces the number of repeated studies related to motion artifact, thus keeping medical costs down for the patient. The support system is fast and easy to use, is mounted and removed in one piece and is tightly secured by adjustable mounting straps. *R-Made, Inc., 6689 Orchard Lake Rd., West Bloomfield, MI 48322. 1-800-258-5386.*

■ Syringe Shield



Biodex Medical Systems has improved the design of their most popular syringe shield by making it quicker and easier to use. The shield now features a white-coated interior to enhance the print on syringes for quick legible viewing. The new spring clamp feature allows broken glass to be replaced in seconds by simply sliding a new piece through the grooved clamp. The syringe shields are lightweight and pencil thin for easy manipulation of shield and syringe combination. Constructed of a special tungsten alloy, protection is greater than an equivalent amount of lead. *Biodex Medical Systems, Inc., Box 702, Shirley, NY 11967-0792.*