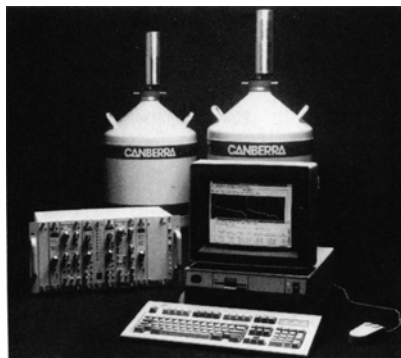


NEW PRODUCTS

■ PC Spectroscopy System



Canberra Nuclear announces Genie-PC, a personal computer spectroscopy system. The unit is designed to incorporate fully independent support of multiple detectors and

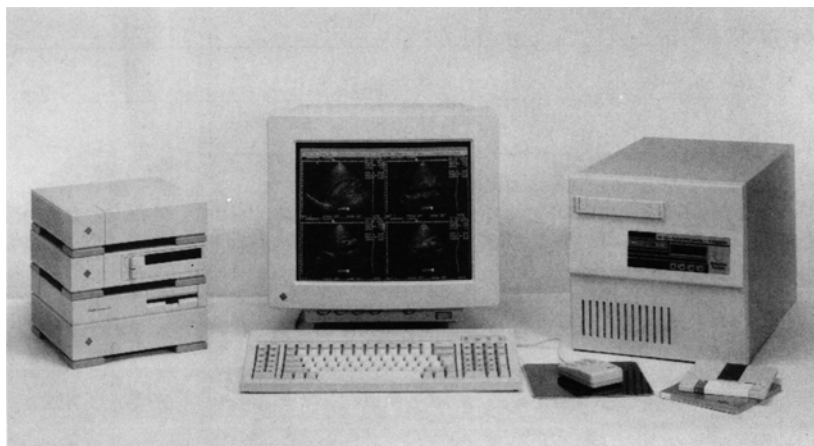
Each description of the products below was condensed from information supplied by the manufacturer. The reviews are published as a service to the professionals working in the field of nuclear medicine and their inclusion herein does not in any way imply an endorsement by the Editorial Board of the Journal of Nuclear Medicine Technology or by The Society of Nuclear Medicine. To receive product information, see p. 18A.

comprehensive network support. With Genie-PC, multiple detectors can be operated independently and simultaneously, through complete counting and analysis procedures.

without fear of collisions or slow downs. Count room operators can access data on demand, at any time, from any place—regardless of where and when it was generated. The system's software accommodates Canberra acquisition boards or the networked Acquisition Interface Module for complete flexibility in locating and configuring detectors. A variety of gamma analysis algorithms are available, which let you choose the right approach for the individual sample. Genie-PC may be operated from an automatic jobstream environment or in an interactive mode—or a combination of both. *Canberra Industries Inc., One State Street, Meriden, CT 06450. (203) 238-2351.*

■ Image Management System

Agfa Corporation introduces Agfa IMPAX Medical Image Management and Archiving System, which provides image management, communication, and archiving for various medical imaging modalities. The system imposes no changes on image recording procedures, equipment or workflow, and film continues to be the primary medium for diagnosis. More image data is stored in less space and at lower cost than conventional film archives, while review of images and data are achieved with a previously unattainable combination of speed, reliability, and efficiency. For image data retention, the system uses an optical jukebox drive, so named because it can hold and manage eleven removable optical discs at once. WORM (Write Once, Read Many) type discs are used to prevent alteration of the image data after it has been archived. Although the system occupies only one cubic foot, the optical jukebox drive has a capacity of 10 Gbytes (Ten billion bytes), which is the equivalent of 33,000 medical images complete with patient data. When any of the eleven discs become full, it can be easily removed from the drive and replaced with a new disc. In one cubic foot off-line, 132 optical discs can be stored. This is enough to store 390,000 images complete with reports. To hold



that many images conventionally would require 65,000 films and more than 270 feet of steel shelving. Workstations are provided for archiving control and for rapid access to images. Each installation includes a high-resolution display, a user-friendly graphic interface and mouse-activated menus. At the click of a mouse, radiologists and technologists can not only review, edit, and print images, but they can also communicate with the Radiology Information System for retrieving patient data and reports. Agfa Medical Gateways are used to acquire images and data in a manner suitable for transmission over local area networks. The Medical Gateways interconnect

scanners with hardcopy video and laser printers. They can network different modalities on a departmental level, or they can unite departments with each other for archival management on a hospital-wide basis. Using remote workstations, any image review or hardcopy requirements can be performed at any location on the network. Accepting as many as six on-line inputs plus input from MATRIX RDS removable disc cartridges, Agfa Medical Gateways are available for different modalities and combinations of modalities. *Agfa Technical Imaging Group, 100 Challenger Road, Ridgefield Park, NJ 07660. (201) 641-9566*

■ Management Software

Systems Plus, Inc. introduces The Medical Manager v/5e, a low-cost, entry-level version of The Medical Manager, a practice management software system. The system is available under DOS formats only. It is a complete accounts receivable and insurance billing system with electronic

claims submission capabilities, providing the medical practice with patient data maintenance and the ability to print numerous financial reports. Advanced electronic claims submission capabilities allow the practice to receive faster payment turnaround from insurance carriers. Users may submit claims either directly to the desired

carrier or through a claims clearinghouse. As the practice's needs increase and more advanced system capabilities are needed, the practice can easily move up to an enhanced version of The Medical Manager. *Systems Plus Inc., 500 Clyde Avenue, Mountain View, CA 94043. (415) 969-7047.*